



BRYAN SAFI

BIOGRAPHY

Over the past few years, Emmy-award winning writer, actor, host, and comedian Bryan Safi has quickly become known as one of the most multi-faceted talents in the entertainment industry today. In 2017 Safi can be seen co-hosting (along with Erin Gibson) the brand new late night show “Throwing Shade,” premiering on TV Land Tuesday, January 17th. Based on the duo’s highly successful podcast, “Throwing Shade” is a clever, timely, and boundary-pushing show, where Gibson and Safi bring their unique perspective to the hottest topics of today. From politics to feminism and gay rights, and the latest celebrity nonsense – Safi and Gibson address it all, in front of a live studio audience.

Aside from working on “Throwing Shade” (the podcast and the television series) Safi recently co-starred in Lifetime’s highly buzzed about thriller, “A Deadly Adoption” starring Will Ferrell and Kristen Wiig. Safi was a scene-stealer as Charlie, a man who runs a local organic food stand with his best friend Ellen [Wiig]. The movie premiered on June 20, 2015, and made nationwide headlines. Safi has also recently been seen on ABC Family’s hit series, “Young and Hungry,” portraying the character of Alan Lowenstein. Safi’s portrayal of perfectionist, decisive, and always blunt Alan [husband to Elliot Park, played by Rex Lee] quickly made him a fan favorite on the show.

On the film front, Safi can be seen in the indie feature “You’re Killing Me,” which debuted to positive reviews at the Inside Out LGBT Film Festival in Toronto in June 2015. IndieWire raved, “You’re Killing Me is thoroughly engaging, coming together in large part thanks to its very talented cast... in the sea of gay films coming at us via LGBT film festivals this summer, it makes for an example of one that actually, you know, says something.”



Though working in the scripted world is a passion for Safi, he also loves hosting and is a regular contributor for national syndicated, weekday television entertainment news program, "Access Hollywood Live." Safi can be seen contributing his quick-witted commentary on their panels, and occasionally sits in as co-host for the show.

While not working on television Safi continues to stay busy with his hit weekly comedy podcast, "Throwing Shade," co-hosted by Erin Gibson. Called one of the top 20 podcasts of 2015 by Entertainment Weekly and Rolling Stone, the show's topics include: women's rights, gay rights, pop culture, adult topics, and politically incorrect ideas. "Throwing Shade" currently lives on the Maximum Fun Podcast Network and debuted on November 9, 2011. Since then, it has earned the People's Choice Podcast Award for the Best LGBT Podcast in 2012, 2013, and 2015. The podcast has become so successful, that aside from turning into a bonafide series on a network, Safi and Gibson often take their act to the road and have toured nationally with the "Throwing Shade Live" show.

Safi won his first Emmy Award for his writing efforts on "The Ellen DeGeneres Show" in 2010. Since then, he has been a staff writer/performer for the Emmy winning comedy website "Funny or Die" which was founded by Will Ferrell and Adam McKay. Safi is also well known for creating and hosting the Webby Award winning That's Gay video series. He has been named one of OUT Magazine's "Out 100," and has been featured in publications including The New York Times, USA Today, and The Hollywood Reporter.

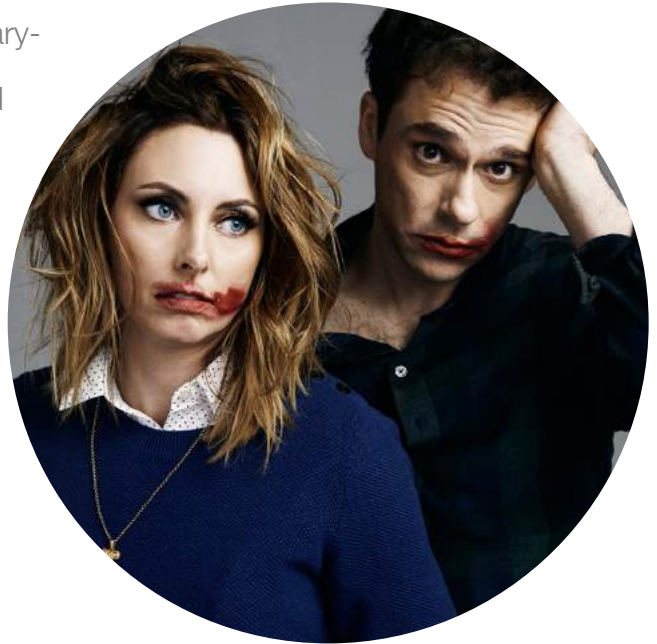
Safi is an alumnus of the Sunday Company at the Groundlings, and performs regularly at the Upright Citizens Brigade Theatre in Los Angeles.



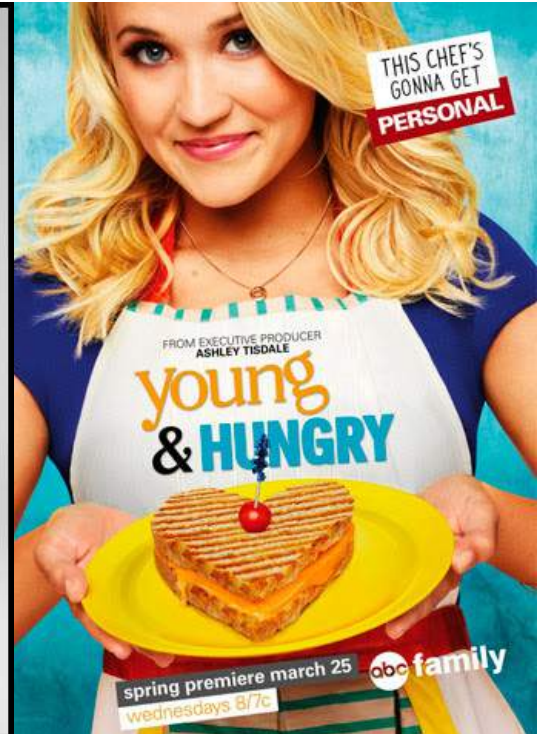
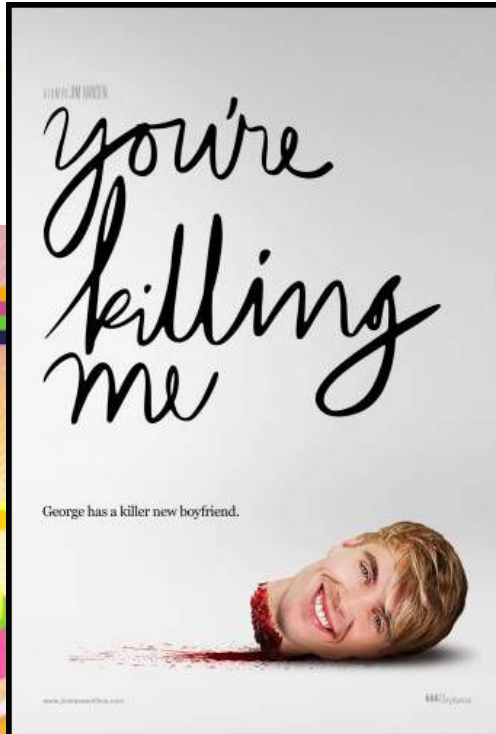
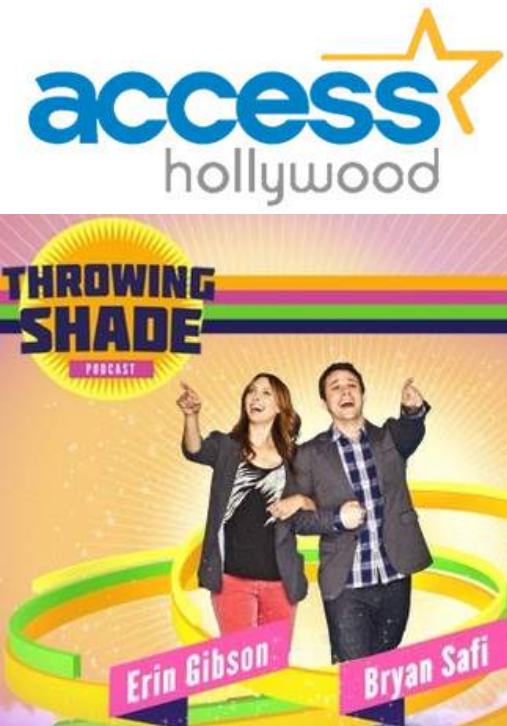
THROWING SHADE

“Throwing Shade” is a clever, timely, and boundary-pushing show based on the popular podcast and Funny or Die web series of the same name. Hosts Erin Gibson and Bryan Safi bring their unique perspective to the hottest topics of today- from politics, feminism and gay rights to the latest celebrity nonsense – in front of a live studio audience.

<http://www.throwingshade.com/>



PROJECTS



GRAB MAGAZINE

CHICAGO'S BIWEEKLY LGBTQ PUBLICATION

August 25, 2015 • Vol. 11 Issue 427 • www.grabmag.com



COVER GRAB BRYAN

Emmy winning writer, actor, host and comedian Bryan Safi

By Mark Nagel

Emmy winning writer, actor, host and comedian Bryan Safi is coming to Chicago Friday August 28 for two shows at Lincoln Hall. Bryan, who is also starting in season two of *Young and Hungry* on ABC Family channel recently charted with GRAB Magazine's Mark Nagel.

Mark Nagel: Where did you grow up?
Bryan Safi: I grew up in El Paso Texas.

M.N.: Were you a funny kid growing up?
B.S.: I was a pretty shy kid and was a closeted kid, I was always doing impressions of my mom and grandma, All of the women in my family are very funny and they loved when I did impressions of them. I just annoyed people to death until they laughed.

M.N.: I know you entertained your family, but did you entertain anyone outside of your home?
B.S.: Not really, I sang and danced for everyone, I remember watching Saturday Night Live as a kid and imitating the Church Lady for my parents and brother and sister.

M.N.: How and when did your talent for writing come about?
B.S.: Honestly, it came about because I wasn't getting enough as an actor. When I was in college and in my senior year, I saw people performing their own material and it made so much more sense to write your own material and go up on stage verses waiting for someone to write something for you that might not be the perfect fit. The writing came for me secondary.

M.N.: In the world we live in today, we are not allowed to be politically incorrect but it seems that only you and



Donald Trump can get away with it. Why is that?
B.S.: [Laughs] That is the best comparison in my life.

M.N.: Why do you get away with it?
B.S.: I think that anyone who comes from a group who has been marginalized has some room to play with it. I know what it's like to be their Donald Trump who comes from 200 million dollars that he was born with, I am an advocate for gay people's and women's rights, and on the podcast ("Throwing Shade" maximumfun.org) because, ultimately, the joke can be on you, but Donald Trump has never made a joke on being a rich,



6 GRAB Magazine August 25, 2015

white guy. When you have been told to shut your mouth for a very long time and have not, Donald Trump just has no self-awareness.

M.N.: I was watching your *Funny or Die* about you wanting to be the first gay commentator at the Super Bowl and it did not happen at the last Super Bowl. Do you have a goal for the next one?
B.S.: I am hoping to end up on the 50-yard line giving all the play by play at the Super Bowl and I am expecting an ESPN contract any day now.

M.N.: But have you learned anything about football yet?
B.S.: No, not really.

M.N.: How did you get Pat O'Brian to appear?
B.S.: Pat O'Brian is like the best sport in the world. I just asked "Funny or Die" to make that call because I was looking for a commentator to show me the ropes and be funny. They went through a few people but Pat was



M.N.: You can almost compare it today to that level with Caitlyn Jenner.

so game. Our relationship off camera was what you see on camera, and he would just look at me and say, what are you doing? He was so much fun to do it with him He is just the best.

M.N.: You have an Emmy for writing on *The Ellen DeGeneres Show*. I have to ask, what is she really like?
B.S.: The best, a genius. I remember growing up and watching the Ellen episode when she came out and I remember there was a warning that you might see things unsuitable for children. All I can think is how hard it was for her to be the first to come out like that so publicly and even from your own people be criticized, and then remerge and have one of the most popular talk shows of all time. It's just incredible.

B.S.: You really can. It's all the same questions. Is it real is it just for attention? I remember when Ellen was on Oprah and her audience was just so nasty. I feel because of people like Ellen, it's why we have come so far. She is not only a trailblazer but so talented.

M.N.: I understand you are on season two of *Young and Hungry*. What is your character all about?
B.S.: My character is Rex Lee's character's boyfriend and I am definitely a very stubborn character. We never see eye-to-eye on anything but we love it. We fight constantly and I am a know-it-all and love it.

M.N.: So, you are playing yourself?
B.S.: [Laughs] I was meeting with the producers and they said I was so arrogant and obnoxious, they had to write me in the show.

M.N.: Lets talk about the reason you are coming to Chicago on Friday August 28 to Lincoln Hall



for two shows. The 9 p.m. show is already sold out. Is it a "Throwing Shade" show with Erin [Gibson] coming also?
B.S.: Yes, Erin is coming and it's essentially what we do on the podcast but live. It will feel like a big stand-up show and will be very interactive with the audience. Erin will take an issue that deals with women I will take an issue about gay people and we kind of blow it out of the water.

M.N.: Best way for fans to keep up with you?
B.S.: Probably on Twitter, @bryansafi.

You can purchase tickets to see Bryan Safi and Erin Gibson in "Throwing Shade" August 28 at Throwingshade.com/tourdates.

MANHANDLER SALOON

35TH ANNIVERSARY WEEKEND
SEPTEMBER 5-7TH

COME HELP US CELEBRATE 35 YEARS AND 35 MORE!

OPEN DAILY NOON TO 4AM
SATURDAYS TIL 5AM

1948 N. HALSTED
773-871-9839

RAFFLES SATURDAY & SUNDAY

DRINK SPECIALS ALL WEEKEND!!!

COME IN ON MONDAY SEPT 7TH FOR OUR BBQ 4-6PM

August 25, 2015 GRAB Magazine 7

ANAL CANCER IS ON THE RISE

FOR THOSE OF US WITH HIV

ANAL CANCER IS RISE MORE EASILY TREATED WHEN DIAGNOSED EARLY, BEFORE SYMPTOMS DEVELOP.

50% OF HIV+ MEN HAVE PRECANCEROUS ANAL CELLS AND ALMOST ALL ARE SYMPTOM-FREE.

WE NEED HIV+ VOLUNTEERS OF ALL GENDERS WHO ARE 35 AND OVER TO TAKE PART IN A NATIONAL ANAL CANCER PREVENTION STUDY.

WHY THE RESEARCH?
ANCHORSTUDY.ORG
BY CALLING 800.445.6348 OR 312-623-2625

THE ANCHOR STUDY.ORG

8 GRAB Magazine August 25, 2015

The Boston Globe

A mix of diss and that

Bryan Safi says for 'Shade' duo, funny comes first

By Nick A. Zaino III
GLOBE CORRESPONDENT

Right up front in their podcast "Throwing Shade," Bryan Safi and Erin Gibson tell their audience they will be taking on issues important to gay men and to women, and "treating them with much less respect than they deserve." They are silly and sometimes catty, discussing a disappointing celebrity sighting of Suzanne Somers at one moment and then moving on to the US Supreme Court's ruling on same-sex marriage.

For Safi, it's a way to keep people interested in weightier subjects — and to take on those who would marginalize gays and women — while still having fun. "I feel like people don't really listen when you take it too serious," he says. "Yes, we want it to be very funny first, but yes, there probably is a message there as well. You can either choose to laugh or cry, and I think people just listen better if they laugh."

He and Gibson are not always preaching to the choir, he says, citing some of the feedback he's gotten from fans, including a frat house full of loyal listeners in his home state of Texas. "I think there are some people who come especially for the issues and to hear what we're going to talk about politically," he says. "But there are other people who come for sort of the ridiculous and sometimes potty humor. And

those are two very different audiences sometime."

Since "Shade" debuted in 2011, the enterprise has grown. The show joined Jesse Thorn's Maximum Fun network of podcasts in 2012, and is also shown in an abbreviated video format on the comedy website Funny or Die, where Safi was once a writer. Monday's live shows at Oberon in Cambridge kick off a 16-city tour, the longest they've done to date.

Part of the podcast's appeal is the chemistry between Safi and Gibson, who met while working at the Upright Citizens Brigade in Los Angeles some five years ago. They weren't instant friends — but once they did connect, they found they shared a common comic language.

"It definitely feels like we know how to push each other's buttons very well," says Safi. "It almost feels like a sibling rivalry of sorts. She knows what's going to get a reaction out of me. I know what's going to get a reaction out of her,



and we love seeing each other at our best, and we love seeing each other at our worst. And that certainly helps us keep that ball in the air."

The podcast features occasional guests like author and TV personality Ross Mathews or comedian Nikki Glaser, but it will be just Safi and Gibson onstage at Oberon. That's not the only difference.

"It almost works as a stand-up show," he says. "It's pretty interactive with the audience. So we're not sitting in chairs recording something. It definitely feels like a big comedy show."

They will do a bit of catching up before the show, because, as Safi says, "the only time we see each other is when we do the podcast and when we do the show." But after that, they'll each take an issue they want to talk about and riff. Since same-sex marriage is in the zeitgeist, Safi has been looking at how The Knot has been capitalizing, offering gay couples ill-informed tips, he says, on planning their weddings. "One of the pieces of advice was, if you feel uncomfortable registering at a place like Crate & Barrel or Williams-Sonoma, why not register at your local CD store?"

It has been a good year for

BUCKLE UP! REPORTER

THROWING SHADE
Bryan Safi and Erin Gibson
At: Oberon, 7 Arrow St.,
Cambridge, Monday,
7:30 p.m. and 9:30 p.m.
Tickets: \$20, 617-495-2668,
www.americanrepertorytheater.org/oberon

Safi. Formerly a writer for "The Ellen DeGeneres Show," he is working on ABC Family's "Young and Hungry" as a supporting character, and is expected to have an expanding role during the season, which premieres Aug. 19. He also had a supporting role in the Will Ferrell/Kristen Whig Lifetime movie, "A Dadsy Adoption."

Safi's interest in politics came long after his interest in comedy. "I became very politically aware during the Prop 8 campaign out here and became very involved in it," he says, referring to the 2008 California ballot measure to make same-sex marriage illegal. "Then I just merged both of those things." Outside of his comedic efforts, Safi works with The Trevor Project, a nonprofit that works to prevent suicide among LGBT youth.

When he first started studying comedy, Safi was only out to a few close friends. It took him a couple of years to finally open up to the world at large, and he was unsure how that might affect his career. "I think I was always afraid to be perceived as 'the gay comedian' or doing 'gay comedy,'" he says. "But I feel that has sort of been shut-tered. Funny is funny."

Nick A. Zaino III can be reached at nick@niezaino.com.

<https://www.bostonglobe.com/arts/theater-art/2015/08/07/throwing-shade-onstage-mix-diss-and-that/PEAcRTDJEo3pAfs71AX72L/story.html>

The screenshot shows the Us Weekly website interface. At the top left is the 'Us WEEKLY' logo. A search bar and a 'SUBSCRIBE' button are on the right. Below the logo is a navigation menu with categories: HOME, NEWS, PHOTOS, VIDEOS, STYLE, BEAUTY, MOMS, BODY, ENTERTAINMENT. A 'TRENDING' section lists names like Nicki V. Miley, Danielle Staub, Michael Seewald, and Jessica Simpson. The main content area features a large advertisement for Philips Sonicare toothbrushes with the headline 'Gold star brushing every day' and a 'Learn more' button. Below the ad is a 'TOP STORIES' section with a featured article: 'Exclusive Video: The Bachelor Gets Broken Down: Hilariously, By Comic Bryan Safi: Watch!'. The article includes a video player showing Bryan Safi and another man on a couch. To the right of the video is another 'Gold star brushing every day' advertisement. The bottom of the page shows social media sharing options and a video player control bar.

<http://www.usmagazine.com/entertainment/news/bryan-safi-breaks-down-the-bachelor-201519>

MADE IN THE SHADE

WE CHAT WITH NATIVE TEXAN, EMMY AWARD-WINNER AND HOST OF PODCAST *THROWING SHADE* BRYAN SAFI, WHO BRINGS HIS SHOW TO STATESIDE THEATRE THIS WEEK



Throwing Shade, Bryan Safi's popular podcast with writer and actress Erin Gibson, rolls into town [Sept. 25 for a live show at the historic Stateside Theatre at the Paramount](#). The duo, according to Safi, "take a weekly look at all the issues important to ladies and gays, and treat them with much less respect than they deserve." The live show is combination of what followers hear during the regular podcast along with audience participation and some improv games.

In addition to the long-running podcast, Safi currently stars as Alan, who owns a karaoke bar and has a crush on Rex Lee's character in ABC Family's *Young & Hungry* and recently costarred in this summer's Lifetime Original Movie *A Deadly Adoption* alongside Kristin Wiig and Will Ferrell. The comedian and actor spoke with us about his unexpected Texas pride, his first death scene and comedy as activism.



'Throwing Shade' Late-Night Comedy Gets Series Pickup At TV Land

TV Land is the latest cabler to enter the late night arena. The network has ordered ten episodes of hit podcast and Funny or Die series *Throwing Shade* for premiere in January 2017.

The political and pop culture show, which will have a live audience, will air in the 11 PM timeslot. Erin Gibson (*Parks and Recreation*, *Kroll Show*) and Bryan Safi (*Modern Family*, *Superstore*) star as themselves, sharing their perspective on today's hot topics.

The TV Land pickup comes amid an explosion of late night shows, including History's upcoming *Night Class* comedy block, a companion to Craig Ferguson's new late-night show, *Join or Die*, along with TBS' *Full Frontal* with Samantha Bee, TruTV's *Late Night Snack*, and the list goes on.

<http://deadline.com/2016/04/throwing-shade-late-night-comedy-gets-series-pickup-tv-land-1201738555/>



<http://www.nbc.com/late-night-with-seth-meyers/video/throwing-shades-erin-gibson-and-bryan-safi-put-beauty-and-the-beast-on-their-shade-list/3486732>

<https://www.youtube.com/watch?v=P5DXgzP1nJU>

<http://www.nbc.com/late-night-with-seth-meyers/video/vice-president-mike-pences-wife-has-a-towel-charm-business/3486731>

<https://www.youtube.com/watch?v=liidd43UwXs>



<http://www.nbc.com/last-call-with-carson-daly/video/throwing-shade/3469762>



https://www.dailymotion.com/video/x3kvrrg_midnight-season-4-episode-12-erin-gibson-bryan-safi-jordan-morris

<http://www.funnyordie.com/videos/2b0844f3fc/erin-gibson-bryan-safi-jordan-morris-moon-landing-midnight>





<http://hollywoodtodaylive.com/the-stars-of-throwing-shade-throw-so-much-shade->



<https://www.facebook.com/TheEliteDailyShow/videos/1745878515723173/?pnref=story>



https://www.facebook.com/plugins/video.php?href=https://www.facebook.com/EntertainmentTonight/videos/10154999591691180/&show_text=1&width=560



A New Frontier for Throwing Shade

Erin Gibson and Bryan Safi have worked together in a lot of venues.

Since first meeting as writer-performers at the legendary comedy troupe the Upright Citizens Brigade, they've teamed up to bring a signature blend of pop-culture patter and political commentary to audiences at live shows around the country, set earbuds buzzing with their popular podcast *Throwing Shade*, and taken their act to Youtube under the umbrella of comedy powerhouse Funny or Die.

Now, starting January 17th, TV Land will be the home of their new late-night show, also called *Throwing Shade*.

They introduce themselves at the beginning of each videocast episode as "feminasty Erin Gibson" "homosensual Bryan Safi," and they mix LGBT and women's issues with straight-up topical silliness.



<http://www.emmys.com/news/online-originals/new-frontier-throwing-shade>



'Throwing Shade' is the extra boost of comedic snark the Trump presidency requires

There's a new weekly primetime talk show that doesn't fit the mold. Instead of correspondents, it has sketches. It has two hosts: a woman and a gay man, and they are proud to be "liberal coastal elites." And they're also tackling niche issues that impact everybody's daily lives, whether they know it or not.

<https://thinkprogress.org/throwing-shade-interview-73837e1ab023>



'Throwing Shade' hosts Erin Gibson and Bryan Safi talk mixing politics and pop culture

When you hear the phrase "throwing shade," you're more likely to think about petty celebrity Twitter feuds than late-night television. But, if Erin Gibson and Bryan Safi have anything to say about it, that may soon well change.

"Throwing Shade," premiering on Tuesday, Jan. 7 on TV Land, is an off-shoot of the comedians' irreverent podcast and web series, both with the same name. Instead of being compared to the current darlings of late-night cable television, Samantha Bee and John Oliver, though, Gibson and Safi would rather you let their upcoming show speak for itself.

<https://www.aol.com/article/entertainment/2017/01/16/throwing-shade-erin-gibson-bryan-safi-interview/21655496/>

Throwing Shade clip: 'Tom Brady, stop Jordan Catalano-ing Donald Trump!'

▶▶▶ Patriots superstar Tom Brady is usually the one who can be found throwing things (see: footballs), but in this exclusive clip from tonight's episode of *Throwing Shade*, it seems it's time for Brady to find himself on the receiving end for once (see: said shade).



<http://ew.com/tv/2017/01/31/throwing-shade-tom-brady-donald-trump/>



Throwing Shade hosts take on *The Bachelor*, Harry Potter, more

▶▶▶ A version of this story originally appeared in the latest issue of *Entertainment Weekly*, on stands now or available [here](#). Don't forget to subscribe for more exclusive interviews and photos, only in EW.

<http://ew.com/tv/2017/01/23/throwing-shade-tv-land-podcast-interview/>



The Queer Audacity of *Throwing Shade*

From the electric colors and incongruous visuals of its opening credits, *Throwing Shade* brings us to camp and lets us stay there. TV Land's new weekly late night news satire, created by and starring Erin Gibson and Bryan Safi, is the hefty dose of queer joy we need to process politics and culture.

Based on their podcast of the same name, which has been running since 2011, the TV version of *Throwing Shade* launched Jan. 17 and airs on Tuesdays at 10:30 p.m. Eastern. It resembles other late-night news shows like *Last Week Tonight*

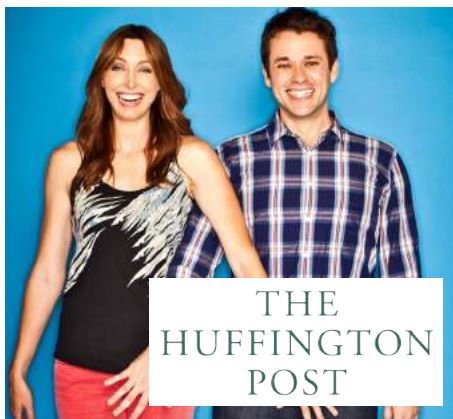
http://www.slate.com/blogs/outward/2017/01/31/throwing_shade_on_tv_land_reviewed.html



Will Cult L.A. Podcast *Throwing Shade* Find Its Audience on Late-Night TV?

On a soundstage in Hollywood last week, dozens of young people waited in line all night to pay homage to a newly christened saint at her candle-adorned altar. The massive framed portrait sitting atop the altar showed a young woman with bleached-blond hair, a tiny upturned nose and big, raccoon eyes. She was, of course, instantly recognizable not as a religious figure but as Tiffany Trump, the 23-year-old daughter of President-elect Donald Trump and his second wife, Marla Maples.

<http://www.indiewire.com/2017/03/tv-land-throwing-shade-unpaid-maternity-leave-1201791317/>



Throwing Shade Comes to TV Land: An Interview with Erin Gibson and Bryan Safi

I'm psyched about *Throwing Shade*, the new show coming to TV Land on January 17th. Comedians Bryan Safi and Erin Gibson already host an acclaimed podcast of the same name and have videos on *Funny or Die*. Much like the podcast, the TV show (executive produced by Gibson and Safi in collaboration with *Funny or Die* executives) will cover political topics peppered in with pop culture. With each one's signature humor and their combined comedic chemistry, the duo will address issues that affect women and gays. On each weekly podcast, Gibson introduces herself as "Feminasty Erin Gibson" and Safi

<http://www.huffingtonpost.com/entry/5871770be4b0eb9e49bfb2c?timestamp=1483838258121>



Erin Gibson and Bryan Safi's Guide to Los Angeles

The stars of TV Land's new late-night news program, *Throwing Shade*, on political correctness and where to find them when they're not cracking jokes

<http://dujour.com/culture/erin-gibson-and-bryan-safis-guide-to-los-angeles/>

'Throwing Shade' Stars Erin Gibson & Bryan Safi on Their New Late Night Show & White House Ambitions

Congratulations on your show, *Throwing Shade*. You guys have such amazing banter. How did you meet?

BRYAN SAFI: We met at the Upright Citizens Brigade Theater.

ERIN GIBSON: Do you think we've known each other for 8 years?

BS: Probably. That sounds about right. We met there and then we worked a couple of jobs together writing. And then we sort of started the podcast just because we both felt, honestly, the closest comparison for Erin and me is we feel like brother and sister. We bicker that way, we agree that way. We always try to needle each other that way so I think it comes out with baseline love.



<https://la-confidential-magazine.com/funny-or-die-erin-gibson-and-bryan-safi-on-throwing-shade-tv-land-show>



Inside 'Throwing Shade's Journey from Podcast to Web Series to TV Show

In 2011, comedians/writers/improvisers/friends Erin Gibson and Bryan Safi were left without a place to speak on important social justice issues after the show they were correspondents on, *InfoMania*, went off the air. Luckily the freedom of the internet means that *nobody* is left without a place to speak their minds, so Gibson and Safi teamed up for the *Throwing Shade* podcast. It didn't take long for the podcast to develop a large and passionate fanbase, which meant a deal with Funny or Die, large soldout live shows across the country, and now their own TV show on TVLand which debuted on January 17th.

<http://splitsider.com/2017/01/inside-throwing-shades-journey-from-podcast-to-web-series-to-tv-show/>

TV Land Is 'Throwing Shade' At Unpaid Maternity Leave - Watch

Last night's episode of TV Land's "Throwing Shade" jumped politically from the likes of Mike Huckabee to crowd-funded breast milk fro-yo. In a sketch detailing the absurdity of paid maternity not being considered a right for women, Erin and Bryan have created their own crowd-funding methods for having a baby. Because, as Erin warns, in this day and age having a baby means that "not only do you have to deal with morning sickness, now you have to learn iMovie."



<http://www.laweekly.com/arts/will-cult-la-podcast-throwing-shade-find-its-audience-on-late-night-tv-7831096>



COCONUT POPCORN AND GEODE CHICKEN: HOW THE HOSTS OF TV LAND'S "THROWING SHADE" COOK AFTER DARK

<http://www.epicurious.com/expert-advice/bryan-safi-erin-gibson-throwing-shade-cook-late-night-dinner-article>



COMEDIANS ERIN GIBSON AND BRYAN SAFI TAKE 'THROWING SHADE' TO TV

<http://www.nbcnews.com/feature/nbc-out/comedians-erin-gibson-bryan-safi-take-throwing-shade-tv-n702426>



ERIN GIBSON AND BRYAN SAFI ARE THROWING SHADE

<http://www.outtraveler.com/exclusives/2017/1/11/erin-gibson-and-bryan-safi-are-throwing-shade>



THIS TV LAND WAS MADE FOR YOU AND ME

<https://www.pastemagazine.com/articles/2017/02/this-tv-land-was-made-for-you-and-me.html>



THROWING SHADE'S BRYAN SAFI AND ERIN GIBSON ON TRUMP, TEXAS, AND BON IVER'S WHALE SONGS

<http://www.avclub.com/article/throwing-shades-bryan-safi-and-erin-gibson-trump-t-248506>



THROWING SHADE WITH BRYAN SAFI AND ERIN GIBSON

<http://www.standardhotels.com/culture/throwing-shade-bryan-safi-erin-gibson>



'HOW CAN WE BULLY THE BULLIES?': HOSTS OF TV LAND'S THROWING SHADE TALK TO MEDIAITE

<http://www.mediaite.com/online/how-can-we-bully-the-bullies-hosts-of-tv-lands-throwing-shade-talk-to-mediaite/>



ERIN GIBSON AND BRYAN SAFI BRING BRILLIANT THROWING SHADE SERIES TO TV

<http://www.businessinsider.com/throwing-shade-tv-land-republicans-2017-1>



BRYAN SAFI - THROWING SHADE IN CHICAGO

<http://chicago.gopride.com/news/article.cfm/articleid/11044529>



'THROWING SHADE' PODCAST BECOMES A TV SHOW... TONIGHT!

<http://www.monstersandcritics.com/smallscreen/erin-gibson-and-bryan-safi-bring-brilliant-throwing-shade-series-to-tv/>



'THROWING SHADE' STARS SAY THEIR NEW TV SHOW WON'T JUST TARGET REPUBLICANS

<http://www.dallasvoice.com/throwing-shade-podcast-tv-show-tonight-10231563.html>

NEW
NOW
NEXT



Bryan Safi Refuses To Get Serious

http://www.newnownext.com/bryan-safi-throwing-shade/01/2017/?xrs=synd_twitter_nnn

OUT

BRYAN SAFI, TV'S NEW KING OF SHADE



Since 2011, comedians Bryan Safi and Erin Gibson have been treating LGBT and women's issues with, in their words, "much less respect than they deserve" on their irreverent podcast **Throwing Shade**. Episodes often conclude with "Shade or No Shade," a segment in which guests pass judgment on everything from Van Cleef & Arpels to applesauce. To celebrate Shade's leap to a late-night slot on TV Land (the show premieres January 17), we asked Safi to sound off on some of today's most pressing topics. **MB**

CHILLED® 
RAISE YOUR SPIRITS

CELEBRITY CHILLIN' WITH

CHILLIN' WITH BRYAN SAFI

 BY CHILLED MAGAZINE



Bryan Safi is a busy man.

His resume speaks volumes: Alum of the Groundlings and Upright Citizens Brigade Theatre. Writer, actor, comedian, host. He won an Emmy for his writing on "the Ellen Degeneres Show" and is a staff writer on "Funny or Die". Like we said a busy man. Let's let him speak for himself.

CHILLED: Tell us a bit about the projects you are working on or have coming up.

BRYAN SAFI: I'm on a 17-city tour right now with "Throwing Shade Live," the comedy podcast I co-host with Erin Gibson. It's a lot of traveling, but it's super fun, completely insane and extremely exciting. Then I'm on the hilarious ABC Family sitcom "Young and Hungry" this fall. Also, you can see me as a contributor on the morning show "Access Hollywood Live" on NBC at least once a week. I fill in as co-host on that show as well.

<http://chilledmagazine.com/chillin-with-bryan-safi/>

PRESS: ON CAMERA



<http://www.accesshollywood.com/videos/plugged-in-should-james-bond-ever-be-gay-or-a-woman/>



<http://www.bttoronto.ca/videos/4444877331001/>



<http://snpy.tv/1Mb9jao>

<http://snpy.tv/1I1bF2m>

<http://snpy.tv/1Mb9Hp9>



<http://www.usmagazine.com/celebrity-news/news/bryan-safi-dishes-his-thoughts-on-kendall-and-kylie-jenner-201549>

CONNECT



<http://www.imdb.com/name/nm2043855/>



<https://twitter.com/bryansafi>



<https://www.facebook.com/bryansafi>



<https://instagram.com/bryansafi>

THROWING SHADE

<http://www.throwingshade.com>



CONTACT

AGENCY

Innovative Artists

P: 310-656-0400

Ian Arougheti

E: ian.arougheti@iala.com

Jayme Yarow

E: jayme.yarow@iala.com

Allie Flauter

E: allie.flauter@iany.com

MANAGEMENT

Haven Entertainment

P: 323-272-3433

Jennie Church-Cooper

E: jcc@haven.la

PUBLICITY

Persona PR

P: 310-601-2734

Jordyn Palos

E: jordyn@persona-pr.com

