




THROWING SHADE

ABOUT

“Throwing Shade” is a clever, timely, and boundary-pushing show based on the popular podcast and Funny or Die web series of the same name. Hosts Erin Gibson and Bryan Safi bring their unique perspective to the hottest topics of today- from politics, feminism and gay rights to the latest celebrity nonsense – in front of a live studio audience.



Emmy-nominated urban witch and multi-hyphenate Erin Gibson is an expert at mixing social commentary, political satire and frank sexual talk into neat little comedy packages. Based in Los Angeles, she co-hosts Throwing Shade and created the necessary Game of Thrones recap show, Gay of Thrones. As an actress, she’s been seen on Key and Peele, The Kroll Show, Parks and Rec, Community and was the host of Current TV’s Modern Lady.  <https://www.instagram.com/gibblertron/>

Bryan Safi is the co-host of “Throwing Shade,” a late night show based on the popular podcast. He also plays Alan on the FreeForm series “Young and Hungry” and has appeared on shows like “The Big Bang Theory,” “Superstore,” “Modern Family” and as Charlie in the Will Ferrell/Kristin Wiig Lifetime movie “A Deadly Adoption.” He won an Emmy for his work on the Ellen DeGeneres Show and won a “Most Improved” trophy for his work on his middle school basketball team.



 <https://www.instagram.com/bryansafi/>

PRESS



<http://www.nbc.com/late-night-with-seth-meyers/video/throwing-shades-erin-gibson-and-bryan-safi-put-beauty-and-the-beast-on-their-shade-list/3486732>

<https://www.youtube.com/watch?v=P5DXgzP1nJU>

<http://www.nbc.com/late-night-with-seth-meyers/video/vice-president-mike-pences-wife-has-a-towel-charm-business/3486731>

<https://www.youtube.com/watch?v=liidd43UwXs>

LAST CALL with
**CARSON
DALY**

<http://www.nbc.com/last-call-with-carson-daly/video/throwing-shade/3469762>



@midnight

https://www.dailymotion.com/video/x3kvrrg_midnight-season-4-episode-12-erin-gibson-bryan-safi-jordan-morris

<http://www.funnyordie.com/videos/2b0844f3fc/erin-gibson-bryan-safi-jordan-morris-moon-landing-midnight>



PRESS



<http://hollywoodtodaylive.com/the-stars-of-throwing-shade-throw-so-much-shade->



<https://www.facebook.com/TheEliteDailyShow/videos/1745878515723173/?pnref=story>



<https://www.facebook.com/plugins/video.php?href=https://www.facebook.com/EntertainmentTonight/videos/10154999591691180/>



A New Frontier for Throwing Shade

Erin Gibson and Bryan Safi have worked together in a lot of venues.

Since first meeting as writer-performers at the legendary comedy troupe the Upright Citizens Brigade, they've teamed up to bring a signature blend of pop-culture patter and political commentary to audiences at live shows around the country, set earbuds buzzing with their popular podcast *Throwing Shade*, and taken their act to Youtube under the umbrella of comedy powerhouse Funny or Die.

Now, starting January 17th, TV Land will be the home of their new late-night show, also called *Throwing Shade*.

They introduce themselves at the beginning of each videocast episode as "feminasty Erin Gibson" "homo-sensual Bryan Safi," and they mix LGBT and women's issues with straight-up topical silliness.

In a typical videocast, the *Throwing Shade* team might start out chatting about people who dress up as dolls, joke about doing foley work for X-rated films, and end up discussing Utah's court decision on gay marriage with a few jokes about blood diamonds thrown in. The two crack each other up easily, interrupt with asides, and throw in plenty of off-color quips.



<http://www.emmys.com/news/online-originals/new-frontier-throwing-shade>

PRESS



'Throwing Shade' hosts Erin Gibson and Bryan Safi talk mixing politics and pop culture

When you hear the phrase "throwing shade," you're more likely to think about petty celebrity Twitter feuds than late-night television. But, if Erin Gibson and Bryan Safi have anything to say about it, that may soon well change.

"Throwing Shade," premiering on Tuesday, Jan. 7 on TV Land, is an off-shoot of the comedians' irreverent podcast and web series, both with the same name. Instead of being compared to the current darlings of late-night cable television, Samantha Bee and John Oliver, though, Gibson and Safi would rather you let their upcoming show speak for itself.

<https://www.aol.com/article/entertainment/2017/01/16/throwing-shade-erin-gibson-bryan-safi-interview/21655496/>

Throwing Shade clip: 'Tom Brady, stop Jordan Catalano-ing Donald Trump!'

▶▶▶ Patriots superstar Tom Brady is usually the one who can be found throwing things (see: footballs), but in this exclusive clip from tonight's episode of *Throwing Shade*, it seems it's time for Brady to find himself on the receiving end for once (see: said shade).



<http://ew.com/tv/2017/01/31/throwing-shade-tom-brady-donald-trump/>



Throwing Shade hosts take on *The Bachelor*, Harry Potter, more

▶▶▶ A version of this story originally appeared in the latest issue of *Entertainment Weekly*, on stands now or available here. Don't forget to [subscribe](#) for more exclusive interviews and photos, only in EW.

<http://ew.com/tv/2017/01/23/throwing-shade-tv-land-podcast-interview/>

PRESS



The Queer Audacity of *Throwing Shade*

From the electric colors and incongruous visuals of its opening credits, *Throwing Shade* brings us to camp and lets us stay there. TV Land's new weekly late night news satire, created by and starring Erin Gibson and Bryan Safi, is the hefty dose of queer joy we need to process politics and culture.

Based on their podcast of the same name, which has been running since 2011, the TV version of *Throwing Shade* launched Jan. 17 and airs on Tuesdays at 10:30 p.m. Eastern. It resembles other late-night news shows like *Last Week Tonight*

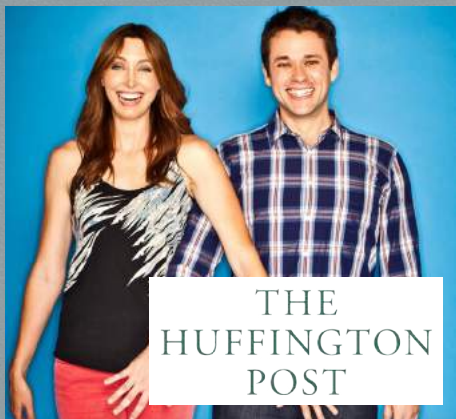
http://www.slate.com/blogs/outward/2017/01/31/throwing_shade_on_tv_land_reviewed.html



Will Cult L.A. Podcast *Throwing Shade* Find Its Audience on Late-Night TV?

On a soundstage in Hollywood last week, dozens of young people waited in line all night to pay homage to a newly christened saint at her candle-adorned altar. The massive framed portrait sitting atop the altar showed a young woman with bleached-blond hair, a tiny upturned nose and big, raccoon eyes. She was, of course, instantly recognizable not as a religious figure but as Tiffany Trump, the 23-year-old daughter of President-elect Donald Trump and his second wife, Marla Maples.

<http://www.indiewire.com/2017/03/tv-land-throwing-shade-unpaid-maternity-leave-1201791317/>



Throwing Shade Comes to TV Land: An Interview with Erin Gibson and Bryan Safi

I'm psyched about *Throwing Shade*, the new show coming to TV Land on January 17th. Comedians Bryan Safi and Erin Gibson already host an acclaimed podcast of the same name and have videos on *Funny or Die*. Much like the podcast, the TV show (executive produced by Gibson and Safi in collaboration with *Funny or Die* executives) will cover political topics peppered in with pop culture. With each one's signature humor and their combined comedic chemistry, the duo will address issues that affect women and gays. On each weekly podcast, Gibson introduces herself as "Feminasty Erin Gibson" and Safi

<http://www.huffingtonpost.com/entry/5871770be4b0eb9e49b9c2c?timestamp=1483838258121>

PRESS



Erin Gibson and Bryan Safi's Guide to Los Angeles

The stars of TV Land's new late-night news program, *Throwing Shade*, on political correctness and where to find them when they're not cracking jokes

<http://dujour.com/culture/erin-gibson-and-bryan-safis-guide-to-los-angeles/>

'Throwing Shade' Stars Erin Gibson & Bryan Safi on Their New Late Night Show & White House Ambitions

Congratulations on your show, *Throwing Shade*. You guys have such amazing banter. How did you meet?

BRYAN SAFI: We met at the Upright Citizens Brigade Theater.

ERIN GIBSON: Do you think we've known each other for 8 years?

BS: Probably. That sounds about right. We met there and then we worked a couple of jobs together writing. And then we sort of started the podcast just because we both felt, honestly, the closest comparison for Erin and me is we feel like brother and sister. We bicker that way, we agree that way. We always try to needle each other that way so I think it comes out with baseline love.



<https://la-confidential-magazine.com/funny-or-die-erin-gibson-and-bryan-safi-on-throwing-shade-tv-land-show>



Inside 'Throwing Shade's Journey from Podcast to Web Series to TV Show

In 2011, comedians/writers/improvisers/friends Erin Gibson and Bryan Safi were left without a place to speak on important social justice issues after the show they were correspondents on, *InfoMania*, went off the air. Luckily the freedom of the internet means that *nobody* is left without a place to speak their minds, so Gibson and Safi teamed up for the *Throwing Shade* podcast. It didn't take long for the podcast to develop a large and passionate fanbase, which meant a deal with Funny or Die, large soldout live shows across the country, and now their own TV show on TVLand which debuted on January 17th.

<http://splitsider.com/2017/01/inside-throwing-shades-journey-from-podcast-to-web-series-to-tv-show/>

PRESS



TV Land Is 'Throwing Shade' At Unpaid Maternity Leave - Watch

Last night's episode of TV Land's "Throwing Shade" jumped politically from the likes of Mike Huckabee to crowd-funded breast milk fro-yo. In a sketch detailing the absurdity of paid maternity not being considered a right for women, Erin and Bryan have created their own crowdfunding methods for having a baby. Because, as Erin warns, in this day and age having a baby means that "not only do you have to deal with morning sickness, now you have to learn iMovie."



<http://www.laweekly.com/arts/will-cult-la-podcast-throwing-shade-find-its-audience-on-late-night-tv-7831096>



'Throwing Shade' is the extra boost of comedic snark the Trump presidency requires

There's a new weekly primetime talk show that doesn't fit the mold. Instead of correspondents, it has sketches. It has two hosts: a woman and a gay man, and they are proud to be "liberal coastal elites." And they're also tackling niche issues that impact everybody's daily lives, whether they know it or not.

<https://thinkprogress.org/throwing-shade-interview-73837e1ab023>



COCONUT POPCORN AND GEODE CHICKEN: HOW THE HOSTS OF TV LAND'S "THROWING SHADE" COOK AFTER DARK
<http://www.epicurious.com/expert-advice/bryan-safi-erin-gibson-throwing-shade-cook-late-night-dinner-article>



COMEDIANS ERIN GIBSON AND BRYAN SAFI TAKE 'THROWING SHADE' TO TV
<http://www.nbcnews.com/feature/nbc-out/comedians-erin-gibson-bryan-safi-take-throwing-shade-tv-n702426>



ERIN GIBSON AND BRYAN SAFI ARE THROWING SHADE
<http://www.outtraveler.com/exclusives/2017/1/11/erin-gibson-and-bryan-safi-are-throwing-shade>



THIS TV LAND WAS MADE FOR YOU AND ME
<https://www.pastemagazine.com/articles/2017/02/this-tv-land-was-made-for-you-and-me.html>



THROWING SHADE'S BRYAN SAFI AND ERIN GIBSON ON TRUMP, TEXAS, AND BON IVER'S WHALE SONGS
<http://www.avclub.com/article/throwing-shades-bryan-safi-and-erin-gibson-trump-t-248506>



THROWING SHADE WITH BRYAN SAFI AND ERIN GIBSON
<http://www.standardhotels.com/culture/throwing-shade-bryan-safi-erin-gibson>

PRESS



'HOW CAN WE BULLY THE BULLIES?':
HOSTS OF TV LAND'S THROWING SHADE
TALK TO MEDIAITE
<http://www.mediaite.com/online/how-can-we-bully-the-bullies-hosts-of-tv-lands-throwing-shade-talk-to-mediaite/>



ERIN GIBSON AND BRYAN SAFI BRING
BRILLIANT THROWING SHADE SERIES TO TV
<http://www.businessinsider.com/throwing-shade-tv-land-republicans-2017-1>



BRYAN SAFI - THROWING SHADE IN
CHICAGO
<http://chicago.gopride.com/news/article.cfm/articleid/11044529>



'THROWING SHADE' PODCAST BECOMES
A TV SHOW... TONIGHT!
<http://www.monstersandcritics.com/smallscreen/erin-gibson-and-bryan-safi-bring-brilliant-throwing-shade-series-to-tv/>



'THROWING SHADE' STARS SAY THEIR
NEW TV SHOW WON'T JUST TARGET
REPUBLICANS
<http://www.dallasvoice.com/throwing-shade-podcast-tv-show-tonight-10231563.html>



CONNECT



<https://www.facebook.com/ThrowingShadeOfficial/>

WWW

<http://www.throwingshade.com/>



<https://twitter.com/throwingshade>



<https://throwingshadepodcast.tumblr.com/>



<https://www.instagram.com/throwingshade/>

**TOUR
DATES**

<http://www.bandsintown.com/ThrowingShade>



CONTACT

BRYAN SAFI
INNOVATIVE ARTISTS

P: 310-656-0400
Ian Arougheti
E: ian.arougheti@iala.com

ERIN GIBSON
HAVEN ENTERTAINMENT

P: 323-272-3433
Jennie Church-Cooper
E: jcc@haven.la

PUBLICITY

Persona PR

P: 310-601-2734
Jordyn Palos
E: jordyn@persona-pr.com

persona/pr

Created by:
Madison Buckley

